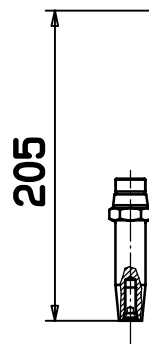
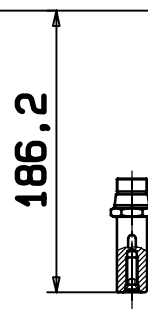


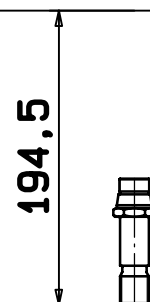
05099601.1013
Nr. 4 SAE Gen.



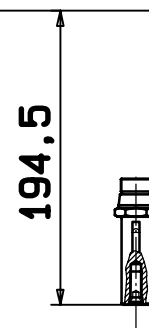
05100001.1013
Zyl. Welle ø20



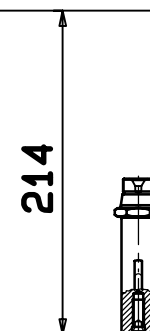
05099901.1003
Nr. 8 3/4" Gew.



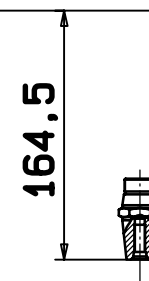
05099801.1003
Nr. 7 3/4" Nut



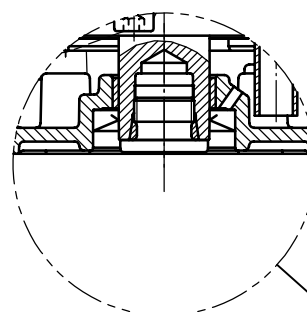
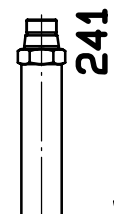
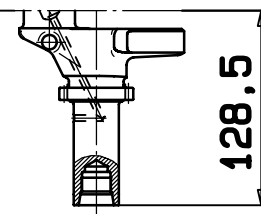
04152501.1003
Zyl. Welle ø 22.2



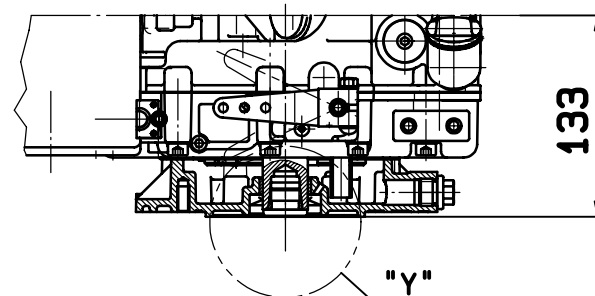
05099701.1003
Nr. 6 Kegel ø 23



05107302.1003
Roh SKT 27



DETAIL "Y"



In the interests of technical progress we reserve the right to introduce modifications.
Änderungen, die dem technischen Fortschritt dienen, behalten wir uns vor.

The range of the length over-all based on tolerances can add up to ± 3 mm
Toleranzbedingte Streubreite bei Kastenmassen ± 3 mm

PROTECTION MARK
ACC. TO DIN 34
Schutzvermerk nach
DIN 34 beachten

HATZ
MOTORENFABRIK
RUHSTORF-ROTT

INSTALLATION DRAWING
Einbauzeichnung
1B20V
SHAFTS AT GOVERNOR-SIDE
Wellen auf sts.
SHEET OF SHEETS
Blatt 4 von 4 Blättern
gez.: 09.03.06 Gerh
gepr.: 09.03.06 Gerh

